

The EN 54-3 approved Mini Fire-Cryer Plus® is a slimline base sounder for discreet mounting under fire detectors. It requires no special wiring and can be retrofitted to existing installations. It is fully synchronised and has an exceptionally low current consumption.

The units can be used as a replacement for electronic sounders or bells to broadcast a clear message for any situation - evacuation, chemical spills, access message, security or general information. A cover plate is available for wall mounting.

Where staged alarm or phased evacuation is required message controllers can be used to allow up to seven different messages to be broadcast across multiple zones on just 2 wires.

Choose from industry designed message sets or bespoke where required.



## Specification

Operating Voltage	20-28 V dc
Current @ 24 V dc, Peak/Avg***	27/20 mA
Effective Sound Output (Typical)- Alert Fast Sweep tone to BS5839- Voice	90 dB (A) *86 dB (A)**
Volume Adjustment from minimum output to maximum output - 18 dB(A)	72 to 90 dB(A)
Weatherproofing	Internal use only
Housing Material	ABS
Temperature Range	-10°C to +55°C
Colour	White
Connections	Screw TB 1.5 mm2

## Part Numbers

FC3/C/W Fire-Cryer Mini, White

## Part Numbers - Message Controllers

VMC/01/02/02/M2	VMC with Keypad and 2.5A PSU
VMC/01/01/02/M2	VMC with Keypad, ZEP and 2.5A PSU
VMC/01/02/05/M3	VMC with Keypad and 5.25A PSU
VMC/01/01/05/M3	VMC with Keypad, ZEP and 5.25A PSU
FC3/EP2	Extinguishant Interface for use with Gas extinguishant panels

**FIRE CRYER®**

## Features

- / Sound Output - 90 dB(A)
- / Ultra-slim base sounder to fit industry standard detector
- / Low current - average 20 mA
- / No special wiring, easily retro-fitted
- / Fully synchronised over multi-zones
- / Suitable for ceiling or wall mounting
- / Choose from industry designed message sets or bespoke where required

## Approvals

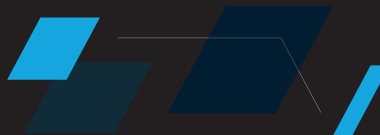


Note:

\*Tone output may vary depending on chosen sound

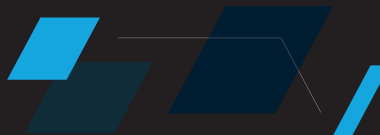
\*\*Voice output may vary due to the nature of human speech

\*\*\*Current consumption may change due to the nature of human speech



## Message Lists

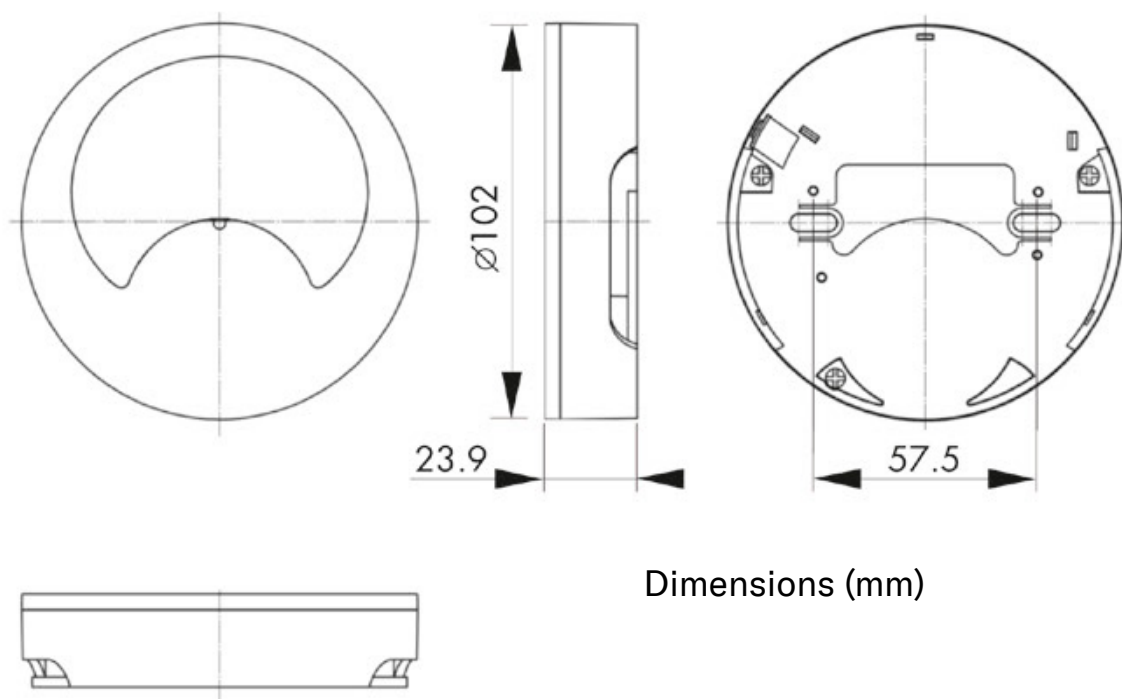
Option A (Fire)	Tone Number	Strobe Y/N	Voice Announcement
First Message	2C	Y	"Fire emergency. Please remain calm and evacuate the building immediately"
Second Message	2P	Y	"This is a fire alert. This a fire alert. Await further instructions"
Third Message	50	N	"This a fire alarm test. No action required. No action required"
Fourth Message	X	N	"All clear. All clear. No action required"
Fifth Message	32C	Y	"A full lockdown is in operation. Please follow full lockdown procedure"
Sixth Message	2C	Y	"Ladies and Gentlemen - due to unforeseen circumstances we must ask you to leave the building immediately by the nearest exit or as directed by members of staff"
Seventh Message	32C	Y	"This is a fire alarm! Please leave the building immediately by the nearest available exit"
Option C (Building Protection)	Tone Number	Strobe Y/N	Voice Announcement
First Message	X	Y	"This site is private property. You are being recorded by CCTV cameras and the police have been contacted"
Second Message	X	N	Attention, the intruder alarm is about to be set and all the lights will be turned off"
Third Message	X	N	"Staff call 100. Stall call 100"
Fourth Message	2C	Y	"You have been identified as an intruder, please leave the area immediately"
Fifth Message	2C	Y	"Please stand still. The security fogging system has been activated and the emergency services have been called. Breathe normally and await further instruction"
Sixth Message	X	Y	"Attention! Fire shutter closing"
Seventh Message	32P	N	"Warning, Fire curtain closing. Please stand clear"
Option D (Gas Suppression)	Tone Number	Strobe Y/N	Voice Announcement
1st Stage Message	2P	Y	"First stage extinguishant release warning"
2nd Stage Message	1P	Y	"Second stage extinguishant release warning"
Gas Release on Hold	X	N	"Extinguishant gas release on hold"
Gas Released	2C	Y	"Extinguishant released"
Order Reference	Option D (GAS SUPPRESSION)		



## Tones Key

Tone Number	Tone Description
2C	Banshee Continuous
1P	Banshee pulsed 1 second ON, 1 second OFF
2P	Banshee pulsed 1 second ON, 1 second OFF, 1 second ON, 1 second OFF
32P	Bell tone pulsed
32C	Bell tone continuous
50	Ping pong tone
X	No tone

## Dimensions



Dimensions (mm)