

IDENTIFIRE 

IDENTIFIRE 

SHAPING ALARM TECHNOLOGY

A NEW APPROACH TO EVACUATION ALARM PRODUCTS & ACCESSORIES

Developed to provide the Evacuation, Fire, Detection and Alarm sectors with a variety of sleek, aesthetically pleasing evacuation and alarm accessories that offer a consistent look and feel across the entire range.

What sets Identifire apart is that it is the only group of evacuation and alarm products available on the market that allows for both flush and surface mounting across the range. This unique flush mounting ability and square form gives this range continuity and an aesthetic edge over its competitors.

70+ PRODUCT VARIATIONS. 11 CORE PRODUCTS:

- Identifire TriTone Sounder
- Identifire TriTone with VID
- Identifire MultiTone Base Sounder
- Identifire VID
- Identifire Remote Lamp Unit
- Identifire Remote Lamp Buzzer Unit
- Identifire Mains Isolator Switch
- Identifire Auxiliary Relay
- Identifire System Connection Box
- Identifire Wide Voltage Relay
- Identifire Single Gang PSU 12/24V



EASY INSTALLATION, EASY ON THE EYE

Identifire is an installer's dream; offering consistency, familiarity and therefore speed of installation. All Identifire products, have the unique ability to be either surface or flush mounted. The ability to flush mount is particularly beneficial to system installers as the Identifire products can be installed using low-cost standard electrical back boxes.

Where surface mounting is required, the Identifire surface back box is specifically designed to fit onto all electrical back boxes with knock-out fixing holes for ease of installation. Our back box also accepts conduit entry and use of cable glands.



FLUSH MOUNTED



SURFACE MOUNTED

CUSTOMISED YOUR WAY

Pad printing allows for identification of system components and functions. Any language can be accommodated meaning that system houses can easily be supplied with customised and OEM solutions when required. At VimpeX, we are pleased to offer hassle-free branding, own-labelling and OEM services so you can make our products your own.



EN 54 & CPR COMPLIANCE

Produced to the highest standards of engineering and design, Identifire products are approved by UL to the EN 54 suite of product standards, ensuring compliance with CPR Regulations. At VimpeX, we are also flexible in considering approval to local approvals and certification schemes on a case-by-case and economically feasible basis.



MULTIPLE COLOUR OPTIONS

Not only is the Identifire range flush or surface mountable, the products are also available in red or white. The Identifire VID products are available with red, blue, green, amber or clear lenses.



2 WIRE COMPATIBILITY

2 Wire systems provide advantages to both the installer and the building owner as it reduces the amount of cabling required to be installed and therefore provides cost savings for both materials and installation cost.

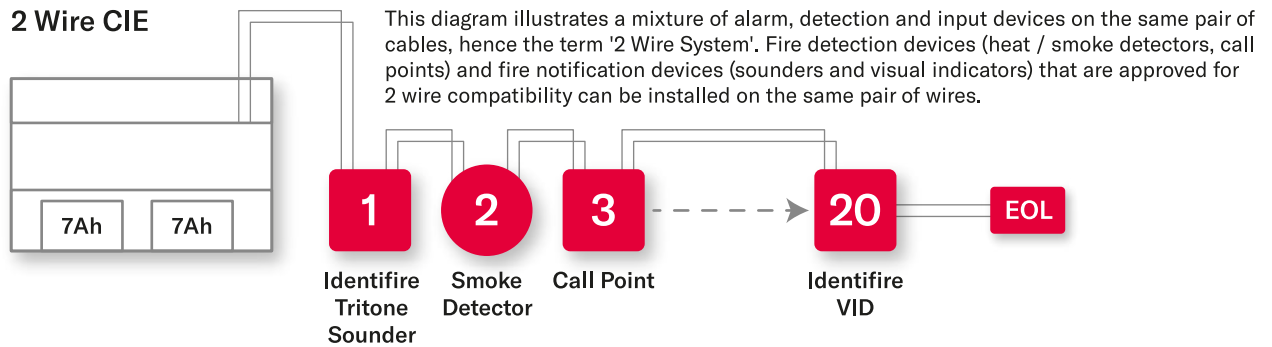
The diagrams below show how a standard fire alarm system is wired compared to a 2 Wire system and how it simplifies the installation.

The Vimpex Identifire products have been designed to accommodate standard fire alarm installations as well as 2 Wire systems providing installers a common Audio / Visual product platform irrespective of the type of system they are installing.

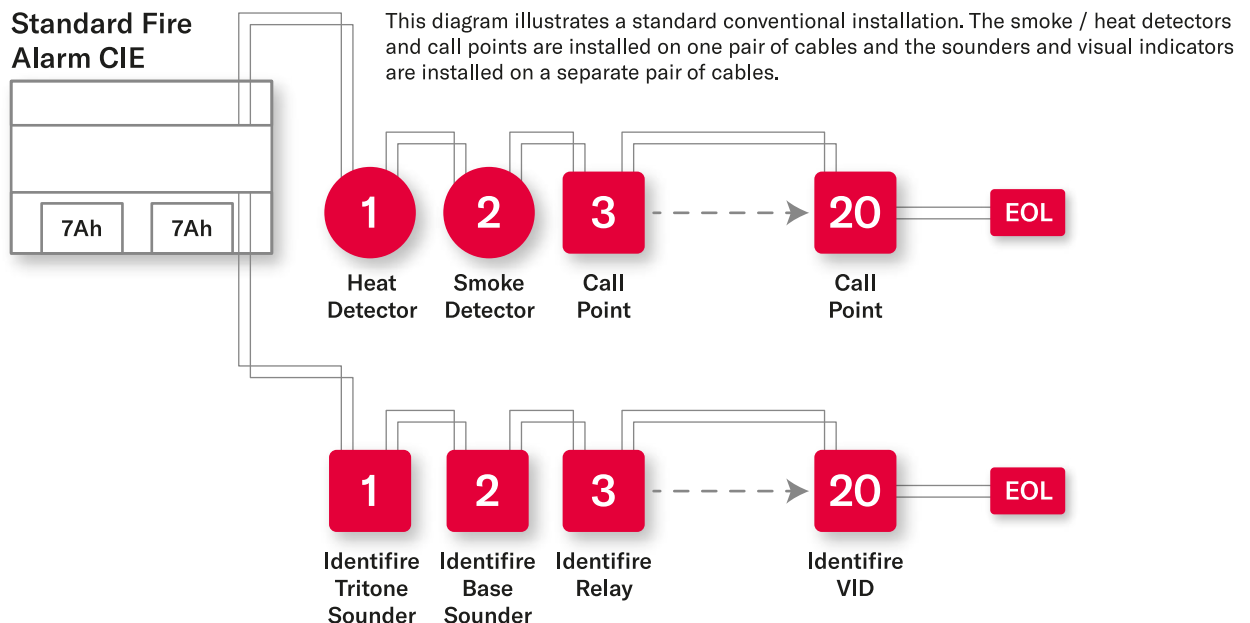


**2 Wire
Compatible**

2 Wire CIE



Standard Fire Alarm CIE



IDENTIFIRE TRITONE SOUNDER

A simple sounder with a great story. Able to be flush or surface mounted with no effect on performance. Available in red or white, TriTone can be customised with customers' logos or other text.

FEATURES

- Approved by UL to EN 54 Part 3
- 92 dB(A) - 96 dB(A)
- 6 mA current consumption
- Low profile and subtle design popular with architects



EN 54-3

 **MADE IN THE UK**

IDENTIFIRE MULTITONE BASE SOUNDER

For installations requiring sounders to mount beneath detector bases, the Identifire range has a solution. With 32 selectable tones, our Base Sounder can also be configured to match the three tones available in the Identifire TriTone range.

FEATURES

- Approved to EN 54 Part 3
- Low profile design for detector base use
- Can be matched to the Identifire TriTone tones
- 32 selectable tones for consistency on site with other products



EN 54-3

 **MADE IN THE UK**



EN 54-3

Available lens colours



 **MADE IN THE UK**

IDENTIFIRE TRITONE WITH VID

Our VID design is superior in performance with very bright LEDs and consistent performance across lens colours. Available in red, amber, clear, blue and green lenses.

FEATURES

- Sounder approved to EN 54 Part 3
- Very bright VID beacon
- Combines sounder and VID beacon in one unit
- Flush or surface mounted



Available lens colours



 **MADE IN THE UK**

IDENTIFIRE VID

We use high quality LEDs to provide a beacon/strobe suitable for all general signalling and ancillary fire signalling. Available in red, amber, clear, blue and green lenses.

FEATURES

- Very bright VID beacon
- Ideal for many general signalling applications
- Can be grid mounted for industrial applications
- Five different lens colours available

IDENTIFIRE REMOTE LAMP UNIT

A bright red LED indicator for use on both conventional and addressable alarm systems. Can be flush or surface mounted.

FEATURES

- Very bright, visual LED
- Suitable for use on both conventional and addressable alarm systems
- Can be printed with any text in any language



IDENTIFIRE REMOTE LAMP BUZZER UNIT

With the same features as our Remote Lamp Unit with the addition of an internal buzzer.

FEATURES

- Subtle local alarm
- Audible/Visual indication of alarm
- Ideal for nurse stations, theatres and building control offices
- Can be printed with any text in any language





IDENTIFIRE MAINS ISOLATOR SWITCH

As recommended in BS 5839-1 and applied as best practice worldwide, Mains isolators are often installed in dark or restricted areas. A bright status LED is therefore vital.

FEATURES

- Rated at a true 8 Amp switch rating
- Key can be removed in any state
- '901' durable and proven engineers key switch



IDENTIFIRE SYSTEM CONNECTION BOX

High quality and sturdy connection box enabling installers and specifiers to match system wiring junctions with other Identifire products.

FEATURES

- Consistent Identifire design
- Can be printed for easy identification
- Can be surface or flush mounted
- Suitable for use on 2 wire systems



IDENTIFIRE AUXILIARY RELAYS

Used to provide an output to third-party components or system ancillaries, such as a power supply, to ensure activation/deactivation during alarm situation.

FEATURES

- Various ratings from 2 - 8 A
- Dual pole - live and negative both isolated
- Consistent with the entire Identifire range
- Can be flush or surface mounted
- All available as 12 or 24 Vdc

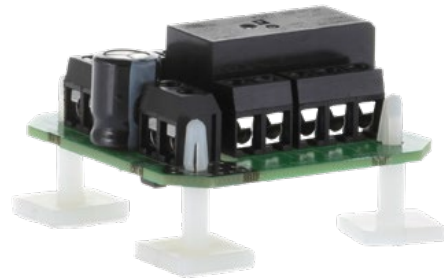


IDENTIFIRE WIDE VOLTAGE RELAY

The Identifire Wide Voltage Relay works across a wide range of voltages making it compatible for both fire and security systems.

FEATURES

- Flush or surfaced mounted options
- Mains voltage switching capability
- 4 x 20 mm knockouts for surface / cable entry
- 10-30 Vdc ideal for Fire and Security systems



IDENTIFIRE UNBOXED WIDE VOLTAGE RELAY

A product featuring two volt free contacts to control/interface additional equipment from the Fire Alarm Control Panel or a VimpeX Voice Message Controller Unit.

FEATURES

- Fits within a panel to save additional enclosures
- Saves time on installation
- Small footprint

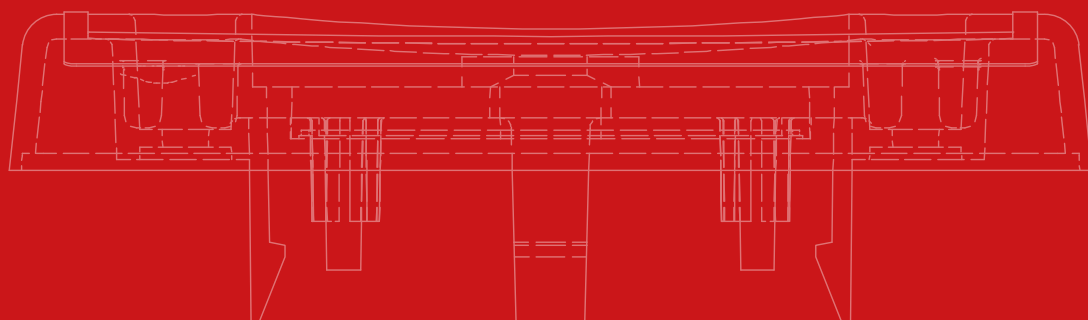
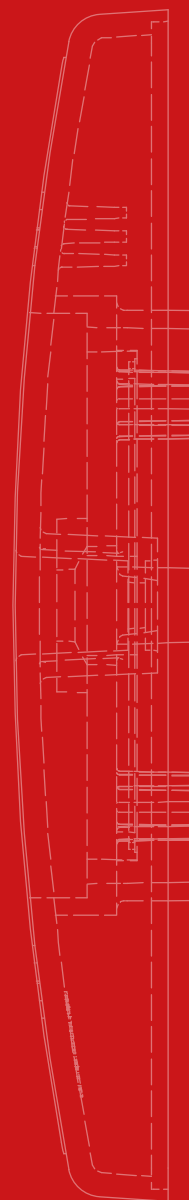
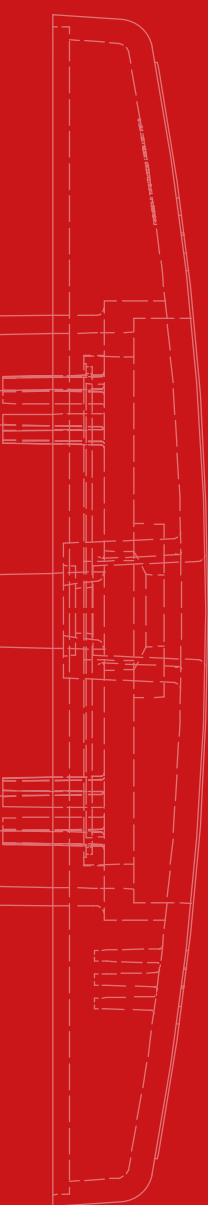
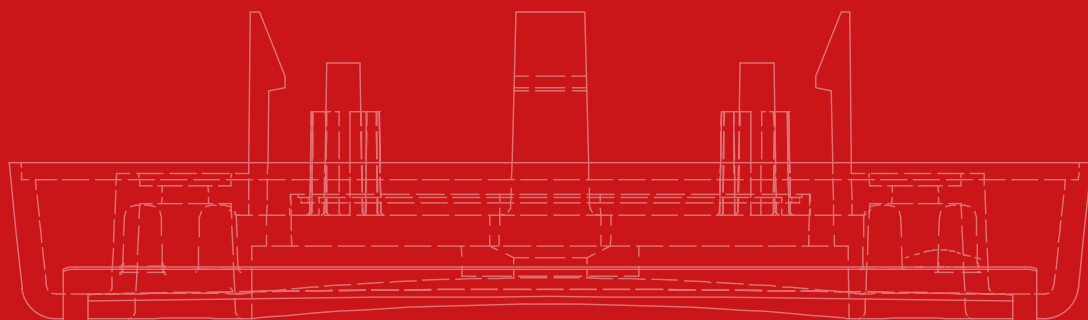
IDENTIFIRE SINGLE GANG PSU 12/24V

The Identifire Single Gang PSU 12/24V is a wide input voltage range Power Supply with selectable 12V or 24V output.

FEATURES

- 800 mA @12 Vdc, 400 mA @24 Vdc
- Can be surface or flush mounted
- LED power indicator
- 12 V / 24 V selectable via Jumper Link







Vimpex LTD
Star Lane
Great Wakering
Essex SS3 0PJ, UK

t. +44 (0) 1702 216999
e. sales@vimpex.co.uk
www.vimpex.co.uk



Quality System Certificate No. 456
Assessed to ISO 9001

DS/3700034 Iss 7

We reserve the right to change or amend any design or specification in line with our policy of continuing development and improvement.